

The BIPV Solar Panel Series

E24™

P101E



Building Integrated Photovoltaics (BIPV) are now available in different sizes, thicknesses and types. E24 offers a comprehensive range of BIPV options to fit almost every application.

Custom designed BIPV solutions are also available.

Brief introduction of BIPV Products Construction Glazing Solar Module

BIPV, Building integrated PV, is widely used in modern building curtain wall to reduce energy consumption.

ARCHITECTURAL AESTHETICS

Finally looks meets function. BIPV allows architects to use solar technology to improve the looks of the buildings while enhancing the energy consumption.

ARCHITECTURAL LIGHTING

The density of cells inside the double glazed panels can be adjusted to fit the required lighting or shading of a given area as per the architects requirements.

SAFETY PERFORMANCE

Made of two or more sheets of tempered glass, E24 BIPV products offer an excellent impact resistance, durability, light transmittance and security solution.

CONVENIENT INSTALLATION

BIPV is double glass components and glass curtain wall closely integrated. Installation techniques and methods are the same as for the ordinary glass curtain Wall. It can fully meet the lighting and isolation Requirements.

LONG SERVICE LIFE

BIPV glazing solar module offer outstanding features including isolation against heat and cold weather, moisture, impact, snow, ice, and wind.

GREEN

BIPV allows buildings to maximize their energy efficiency and compliance to green building requirements while enhancing their looks and controlling light.

Products Construction

BIPV Glazing Solar Module

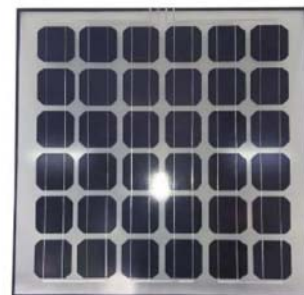
Two layers of 4mm, 6mm, 8mm tempered glass, are used to sandwiched mono or polycrystalline cells connected together with a thin invisible wire. The resulting product behaves exactly as a standard tempered glass material. The BIPV modules are connected together through their discrete connection outlet making the wires invisible.

Application

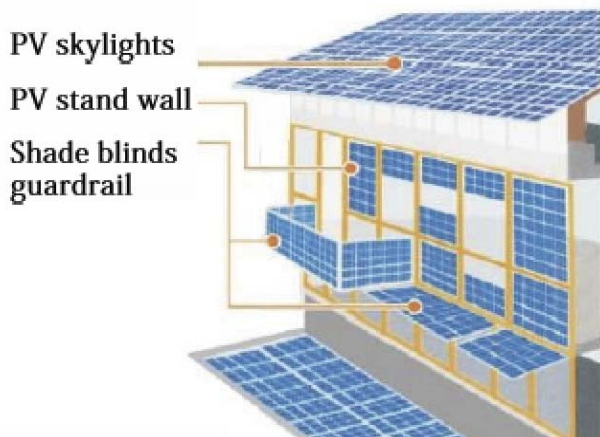
Solar pergolas, curtain walls, green houses, bus stations and other shelters, hall ways etc.



BIPV Glazing Solar Module Picture



Hollow BIPV Glazing Solar Module Picture



Swiss Project

Module Size: 1215 × 1370 × 14mm
Module Structure: 8mm ultra white tempered+PVB+cells+PVB+8mm tempered
Cells: Monocrystalline 125, 7 × 8 arranged
Power: 125W
Transmittance: 48%

BIPV Custom Design

Size:

300 mm to 2000 mm x 2500 mm

Glass:

- Thickness 3.2 mm, 4 mm, 6 mm, 8mm
- Type: Ultra white tempered and ordinary tempered

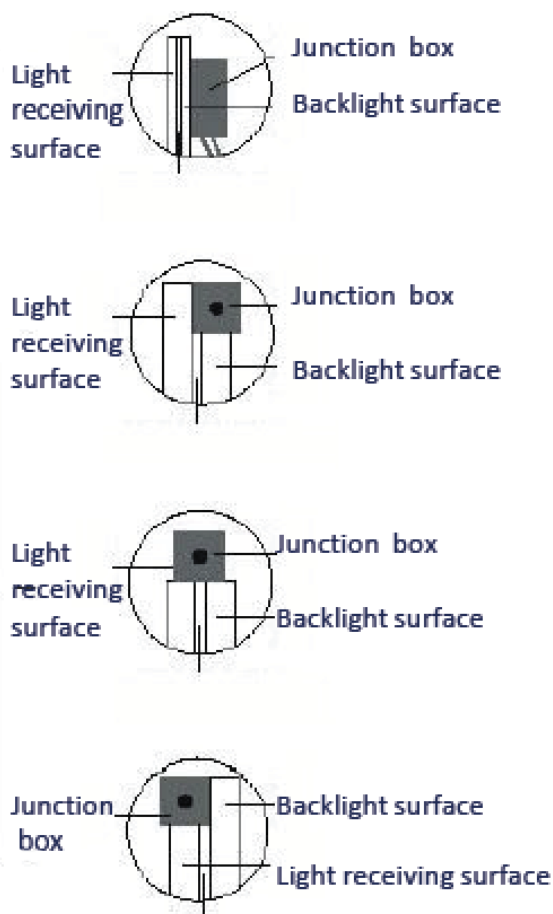
Cells:

Monocrystalline 235, Monocrystalline 156, Polycrystalline 156, color polycrystalline 156

Structure:

Two layers, three layers, four layers

Junction box



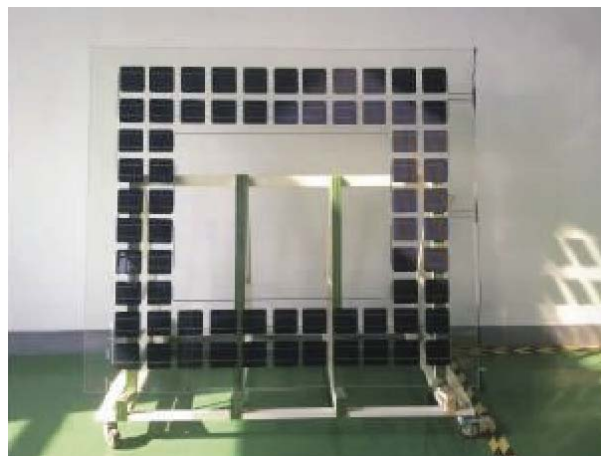
Quality Control

High-quality raw materials

E24 uses grade A photovoltaic PVB, first-class cells and glass.

Advanced technology and customising

E24 offers standard BIPV products but can also customize products to fit customers requirements.



Color Polycrystalline Project



Module Size: 1240 × 1800 × 14mm
Module Structure: 6mm ultra white tempered+PVB+cells+PVB+6mm tempered
Cells: Color polycrystalline 156,8 × 9 arranged
Power: 180W
Transmittance: 40%

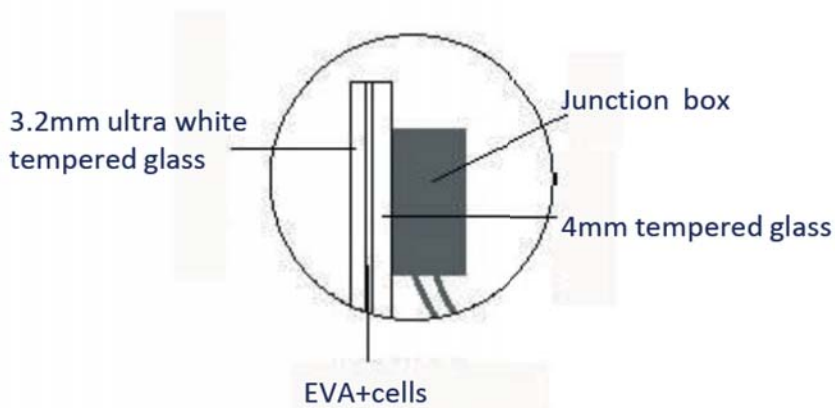
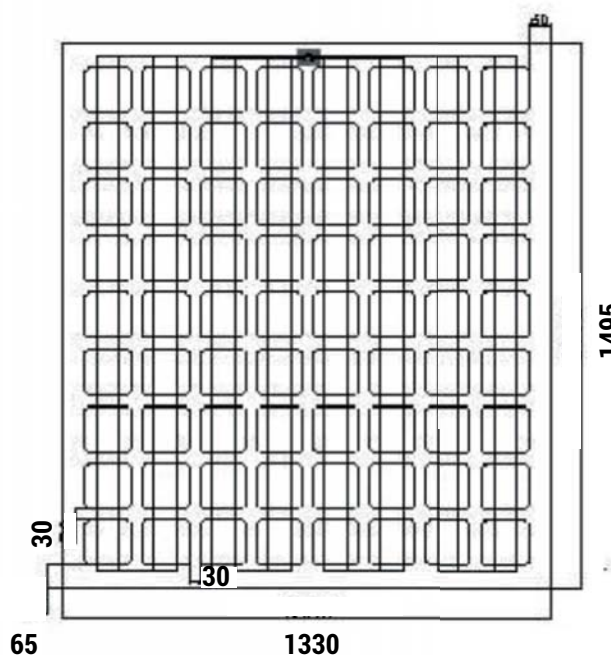
Sample Custom Design Specifications

BIPVM72-195-08

Module size (mm)	1330 x 1495 x 8.5
Cells	Monocrystalline 125, 8x9
Light Receiving Surface	3.2 mm ultra white tempered
Backlight Surface	4mm tempered
Laminated Film	EVA
Rated Power (W)	195
Vmp (V)	37.6
Imp (A)	5.19
Voc (V)	44.8
Isc (A)	5.49
Panel Eff.	9.9%
Transmittance	43 %
Weight (kg)	42

Application

Mainly used in vegetable greenhouses.

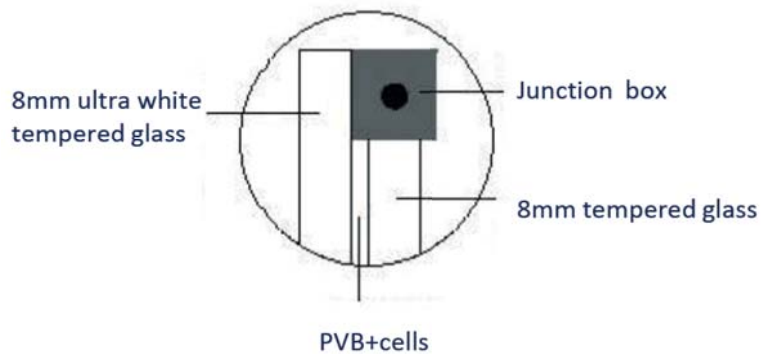
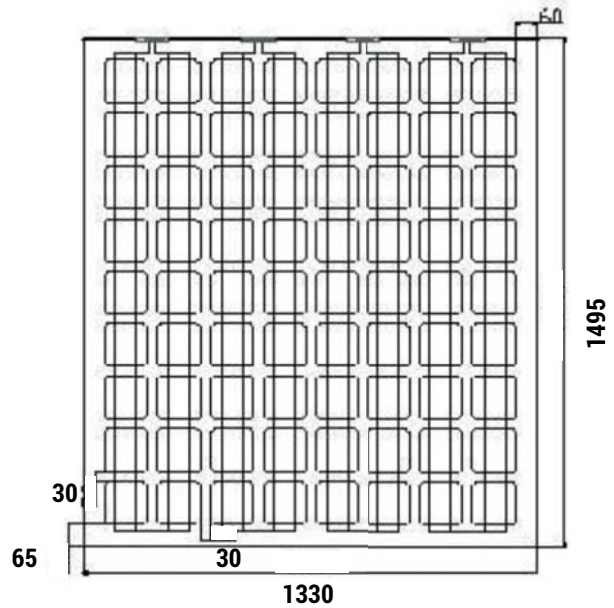


BIPVM72-180-13

Module size (mm)	1330 x 1495 x 13.5
Cells	Monocrystalline 125, 8x9
Light Receiving Surface	8 mm ultra white tempered
Laminated Film	8mm tempered
Backlight Surface	PVB
Rated Power (W)	180
Vmp (V)	36.8
Imp (A)	4.89
Voc (V)	44.6
Isc (A)	5.30
Panel Eff.	9%
Transmittance	43 %
Weight (kg)	54

Application

- 1- used in a variety of roof, fence
- 2- building roof and building curtain wall



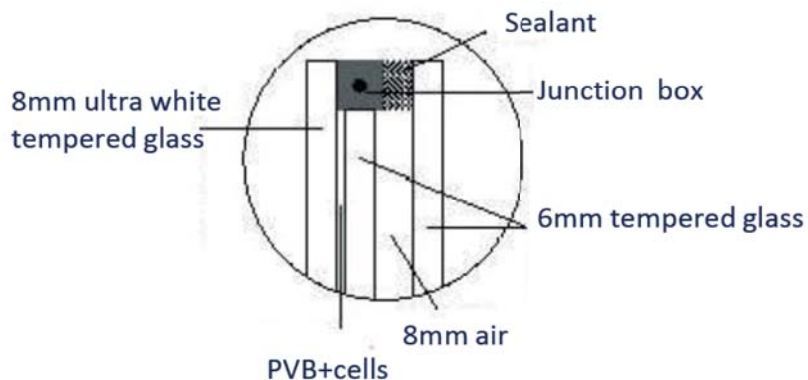
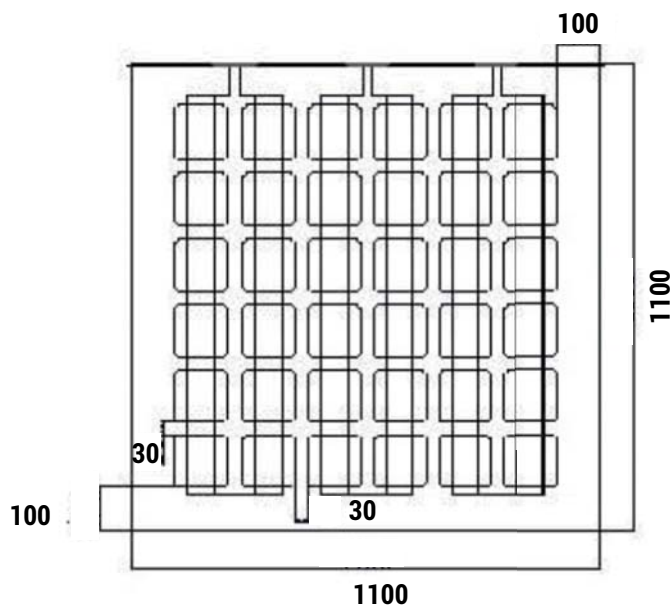
Sample Custom Design Specifications

BIPVM36-090-28

Module size (mm)	1100 x 1100 x 28
Cells	Monocrystalline 125, 6x6
Light Receiving Surface	8 mm ultra white tempered
Backlight Surface	6mm tempered
Hollow layer	6mm tempered
Air layer	8mm
Laminated Film	PVB
Rated Power (W)	90
Vmp (V)	18.5
Imp (A)	4.86
Voc (V)	22.2
Isc (A)	5.33
Panel Eff.	7.4%
Transmittance	53 %
Weight (kg)	60

Application

- 1- greenhouses
- 2- Building roof and building curtain wall

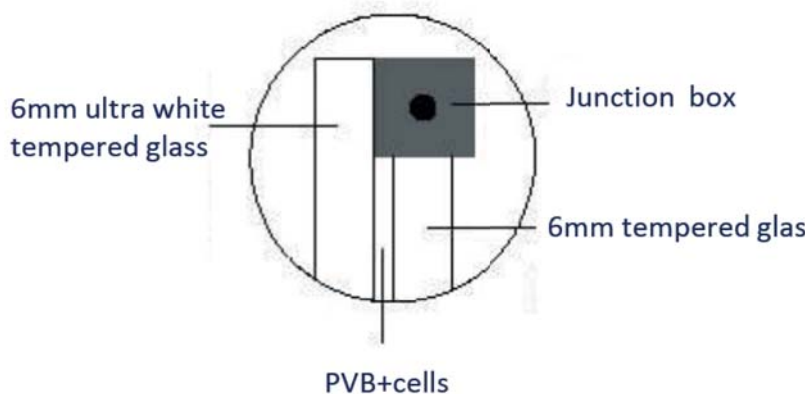
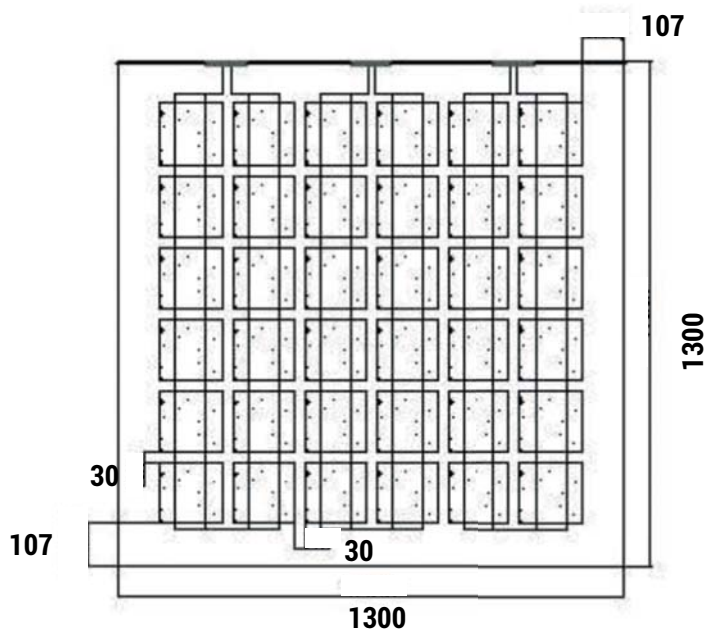


BIPVP36-120-13

Module size (mm)	1330 x 1300 x 13.5
Cells	Color polycrystalline 156, 6x6
Light Receiving Surface	6 mm ultra white tempered
Laminated Film	6mm tempered
Backlight Surface	PVB
Rated Power (W)	120
Vmp (V)	17.0
Imp (A)	7.1
Voc (V)	21.6
Isc (A)	7.6
Panel Eff.	7.14%
Transmittance	48 %
Weight (kg)	55

Application

- 1- used in a variety of roof, fence
- 2- building roof and building curtain wall



Shanghai Telecom Project

E24 Modular Range Of Products For Building Easy, Flexible & Evolutive Solutions

E24 products dynamically evolve with the lifestyle and work style of its customers while easing the installation process.

E24 products are conceived in modules allowing for an easy upgrade to adjust with the needs of the customers. Being modular and easy to connect E24 products allow installers to easily configure the required modules for an optimal solution while offering easy upgrade options.

Module Size: 1493 × 1985 × 18mm
Module Structure: 8mm ultra white tempered+PVB+cells+PVB+8mm tempered
Cells: Monocrystalline 125,8 × 12 arranged
Power: 240W
Transmittance: 45%

Xi'an Project

Module Size: 1440 × 1554 × 14mm
Module Structure: 6mm ultra white tempered+PVB+cells+PVB+6mm tempered
Cells: Monocrystalline 125,8 × 9 arranged
Power: 180W
Transmittance: 50%

Sweden Hanabusa project



Module Size: 728 × 2200 × 11mm

Module Structure: 3.2mm ultra-white Suede tempered+EVA+cells+EVA+6mm tempered

Cells: Polycrystalline 156, 3 × 11 arranged

Power: 125W

Transmittance: 50%

Ordering Information

Ref Number	Description
BIPV1-290-1	Mono Crystalline Solar Photovoltaic BIPV Panel 290Wp (6x12x2 half cells), 1644x986x7mm
BIPV1-350-1	Mono Crystalline Solar Photovoltaic BIPV Panel 350Wp (6x12x2 half cells), 1950x986x7mm
BIPV2-105-1	Mono Crystalline Solar Photovoltaic BIPV Panel 105Wp (3x7x2 half cells), 1180x580x9mm
BIPV2-105-2	Mono Crystalline Solar Photovoltaic BIPV Panel 270Wp (5x10x2 half cells), 1550x980x9mm



E24[®]

www.e24solutions.com



ISO 9001:2015



QUALITY STANDARD

